



GMT MONTHLY MEMBERSHIP PROGRESS REPORT

Results as of: 6/30/2020

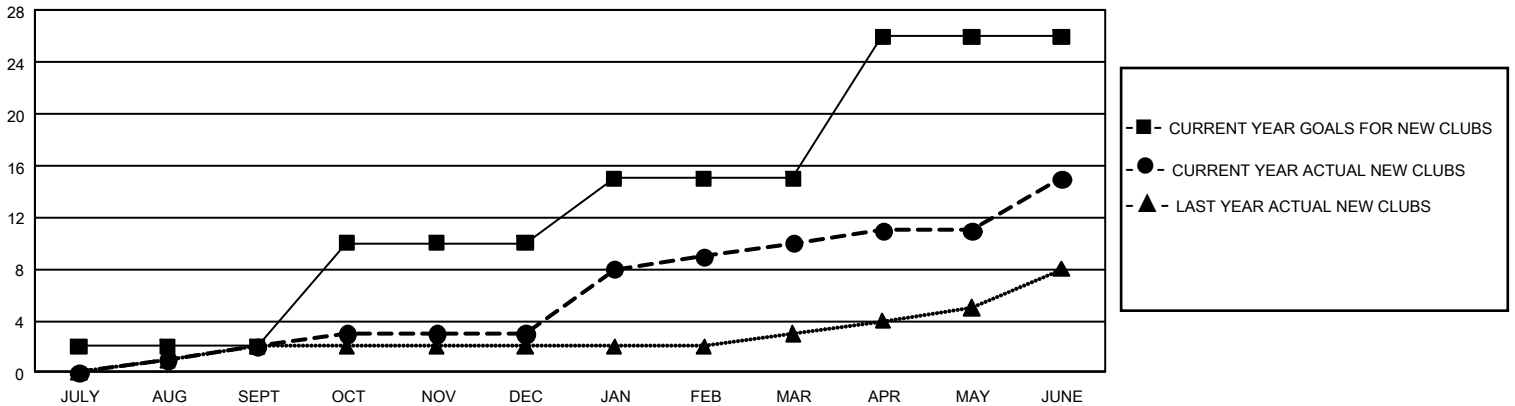
GMT Constitutional Area 7, Group A

GMT: OPEN

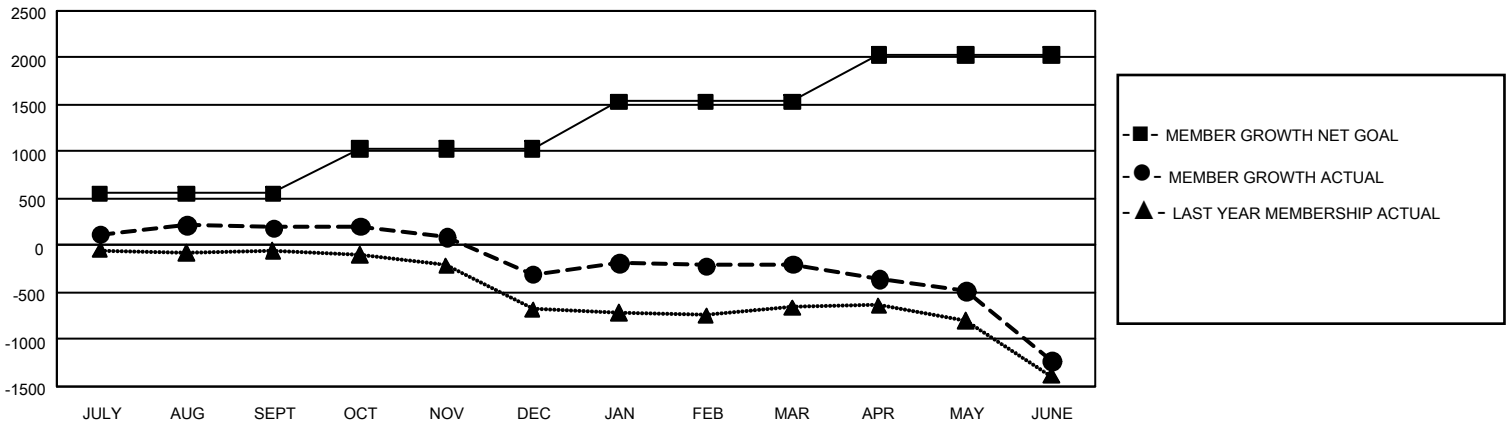
REPORT DOES NOT INCLUDE CLUBS IN UNDISTRICTED AREAS.

Clubs				Members			
RESULTS FOR 2019-2020				RESULTS FOR 2019-2020			
QUARTER	NEW CLUB GOAL	NEW CLUBS	DROPPED CLUBS	QUARTER	MEMBER GROWTH NET GOAL	MEMBER GROWTH ACTUAL	DROPPED MEMBERS ACTUAL (including transfers)
JULY/AUG/SEPT	6	2	7	JULY/AUG/SEPT	1,656	1,100	774
OCT/NOV/DEC	24	1	4	OCT/NOV/DEC	1,443	685	1,083
JAN/FEB/MAR	15	7	5	JAN/FEB/MAR	1,506	1,098	869
APR/MAY/JUNE	33	5	6	APR/MAY/JUNE	1,503	514	1,416

GOALS AND ACTUAL NEW CLUBS CUMULATIVE



GOALS AND ACTUAL MEMBERS CUMULATIVE



DROPPED CLUBS: 20	850 CLUBS OF 1,402 ADDED 1 OR MORE NEW MEMBERS	<u>GENDER DISTRIBUTION</u> MALE 18,560 (65.75%) FEMALE 9,669 (34.25%)
<u>DROPPED MEMBERS</u> DECEASED 404 CLUB CANCELLED 16 OTHER 3,720 <hr/> TOTAL 4,140	CLICK HERE FOR CUMULATIVE MEMBERSHIP DATA	TOTAL FAMILY UNIT MEMBERS 4,514 FAMILY MEMBERS PAYING HALF DUES 2,294